

NICHO

(MINI SHRINE)





Monarcas y Memorias: Visitantes Eternas

The purépechas considered monarch butterflies to be the souls of the dead, returning to visit us in this realm. Here, we commemorate the lives of the dearly departed and welcome the return of their spirits as we celebrate their eternal memories. This 29th Annual exhibition will feature altares from community groups and contemporary expressions of this long standing cultural practice.





What is a Nicho?

Nichos are 'shadow box' style frames that are often featured on Day of the Dead ofrendas or hanging in the home. They are traditionally made of tin or wood and decorated with sequins, glitter and beads.

Usually featuring a key object or central figure for whose honor or memory the nicho has been created. This nicho craft activity is an introduction to some of the crafts used in the Mexican Day of the Dead.





THINGS YOU WILL NEED

Glue

Scissor

Paint

EXTRAS (OPTIONAL)

Construction paper

Glitter

Fake flowers

and else you would like to use



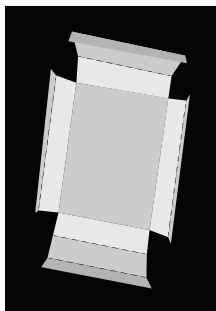


THE
ASSEMBLY

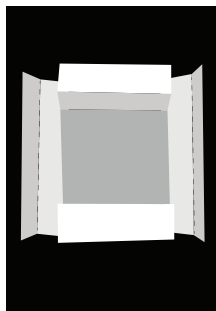




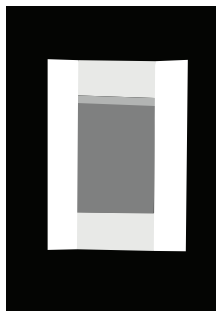
Cut and fold all the dotted lines,
glue the box frame. It should
look like this when done.



Fold all
dotted
lines



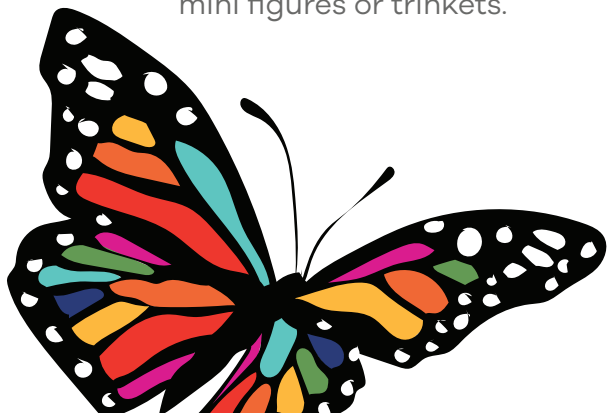
Place glue
on blank
side of tab
3, and fold
inwards



Place glue
on of tab
5 in the
squared
boxes,
and fold
inwards



Continue decorating your nicho! You can add sequins, gems, and also add 3D objects like paper or plastic flowers, mini figures or trinkets.





Credit to:

<https://static1.squarespace.com/static/59b9c2b7d2b8570174037c16/t/5d8e397c9acfb2769b5c613/1569601920163/2019+MOLAA+Dia+de+los+Muertos+Packet.pdf>